

**DOWNS COMMITTEE**

**Date: 6<sup>th</sup> September 2010**

**Title: Provision of a new bus stop on Saville Road for University bus services**

Author: Alan Sibley, Team Manager, Transport Services Group, City Development.

Contact details: Brunel House / Ext 22949

**Recommendation**

The Committee is requested to note the contents of this report which are presented for information only.

**Introduction**

Bristol University and the University of the West of England (UWE) are jointly providing two new bus services for students and staff, operating between the Stoke Bishop campus and the UWE campus at Bower Ashton, via the main Bristol University campus at Tyndalls Park. The principal objectives of providing the bus services are:

- To improve travel choices and site accessibility and to improve social inclusion as part of the universities' travel plans;
- To improve recruitment and retention by making the universities more attractive places for students and staff;
- To reduce the universities' carbon impact as part of the Bristol Universities Carbon Management Plan;
- To provide students of UWE living in the vicinity of Whiteladies Road and Tyndalls Park with a direct bus service to the Bower Ashton Campus.

The U6 service operating between Stoke Bishop and Tyndalls Park will commence from 4<sup>th</sup> October 2010, while service U6A operating between Stoke Bishop and Bower Ashton will commence from 18<sup>th</sup> September 2010. The services will be available for use by the general public.

**Issues**

**Bus Stop Location**

Following an investigation by consultants into a range of options for the siting of a new bus stop to serve the Stoke Bishop Campus, it was concluded by Bristol University that the most suitable option to meet the universities' objectives was the provision a bus stop on Saville Road close to Hollybush Lane (refer to Appendix 1). This location was chosen for the following reasons:-

- Hollybush Lane is the main pedestrian access used by students to/from the campus and is on the natural desire line towards central Bristol;
- Saville Road enables an efficient and more cost effective one-way loop to be operated via Stoke Road, Saville Road, Parry's Lane and Westbury Road, avoiding the need for buses to operate empty around Stoke Bishop;

The location selected for the new bus stop on Saville Road taking into account road safety, passenger amenity and the views of local residents is adjacent to lamp column number 6, approximately 50m to the southeast of the junction of Hollybush Lane and Saville Road. This location has been adopted instead of a site some 75m to the northwest of the junction in response to concerns expressed by local residents at a consultation meeting on 28<sup>th</sup> July over the disturbance that students could cause to residents of the Grange, an elderly persons home.

Advice on the designation of the land required to build the stop given by Traffic Management has been verified by Legal Services who have confirmed that it is designated as Highway Land and therefore does not require approval from the Downs Committee.

Bristol University has outline plans to provide improved vehicular access to the Stoke Bishop Campus via a new access road by 2012. It is planned that a dedicated bus terminus is to be included in these works. Subject to funding and planning permission, the completion of these works would allow for the future removal of the bus stop on Saville Road.

### **Bus Stop Infrastructure**

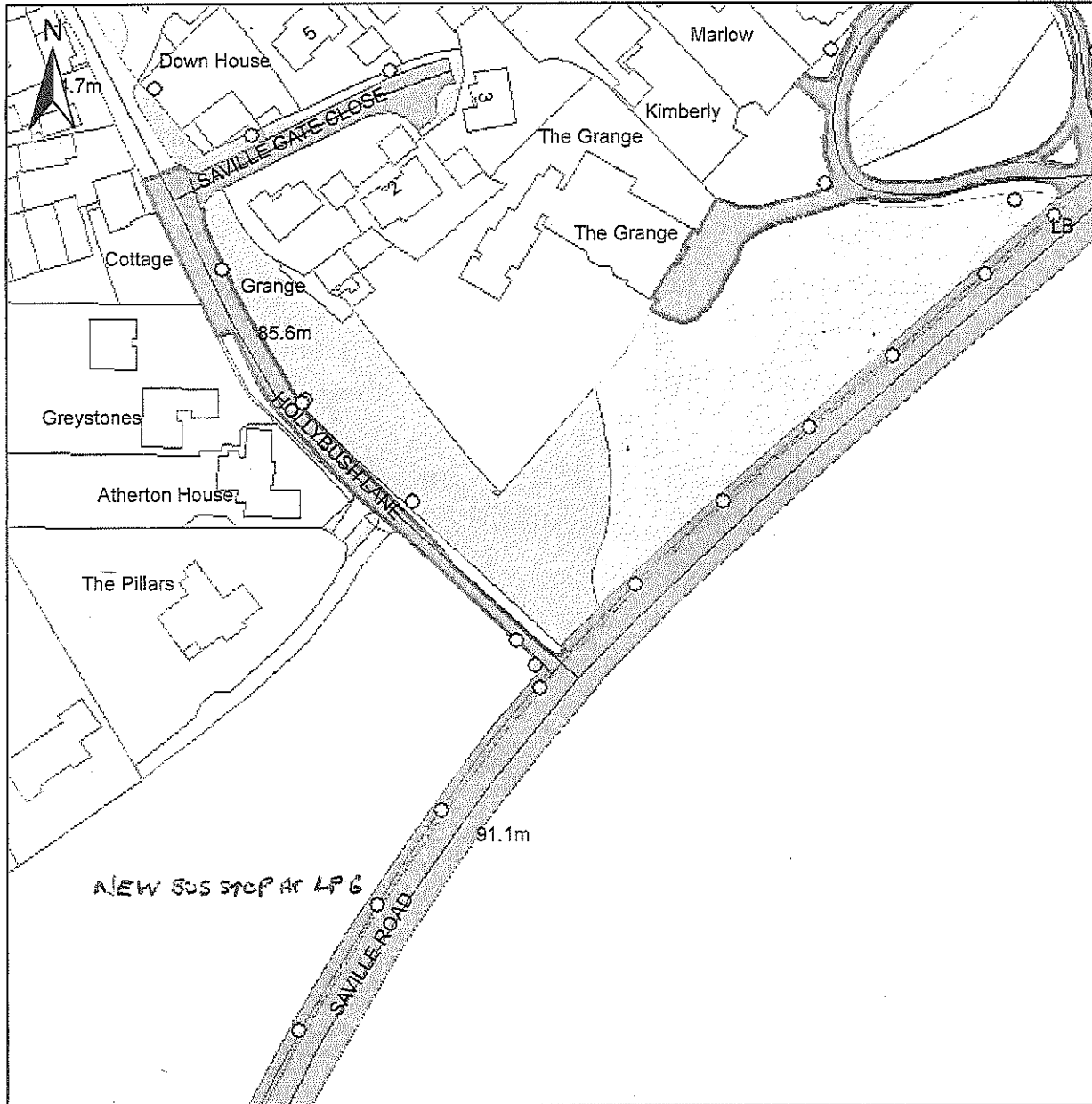
At the stop a 10 metre by 2.5 metre section of the existing grass verge and footway will be used to provide a raised boarding platform which will rise to a height of 220mm. The size of the boarding platform has been planned to cope with the very large groups of students expected to be waiting at peak times. The raised platform will facilitate step-free boarding on to the buses, removing any barrier to passengers with a mobility impairment (refer to Appendix 2).

A 'bus stop box' and clearway 39 metres in length will be marked on the highway to ensure that buses have safe and unimpeded access to the stop. It will enable two buses to pick up or wait at the stop when necessary. The clearway will be in operation twenty-four hours per day over seven days a week.

Arrangements are being made to appoint a contractor to undertake the works in late August / early September, to ensure that they are ready in good time for the commencement of the first service on 18<sup>th</sup> September.

### **Conditions placed upon the University**

In direct response to the concerns expressed by local residents over the bus stop plans, the Council has set out a list of conditions which it expects the University to meet. The conditions have the objective of minimising the impact of the operation of the bus stop on local residents. The University has in return given an undertaking to use its 'best endeavours' to fulfil these conditions. The conditions cover security patrols, litter clearance, limits on the number of buses at the stop, responsibility for construction costs, a commitment to progress the new access scheme and, complaint reporting mechanisms.



- REFUGE COLUMN
- SCHOOL FLASHER
- SIGN
- STREET LIGHT
- SUBWAY
- TRAFFIC SIGNAL
- XMAS SOCKET
- ZEBRA

— LPG Streets

**Adopted Highways**

Adopted, Confirmed

- A Road
- B Road
- C Road
- Footpath
- Motorway (not BCC-maintained)
- Pedestrianised
- Trunk Road A
- Unclassified

Unadopted, Confirmed

- Section 38
- Prospectively Maintainable

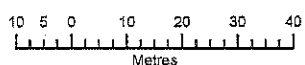
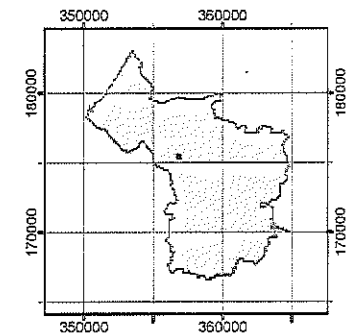
Adopted, Under Review - Seek Clarification from Highways

- A Road
- B Road
- C Road
- Footpath
- Motorway (not BCC-maintained)
- Pedestrianised
- Trunk Road A
- Unclassified

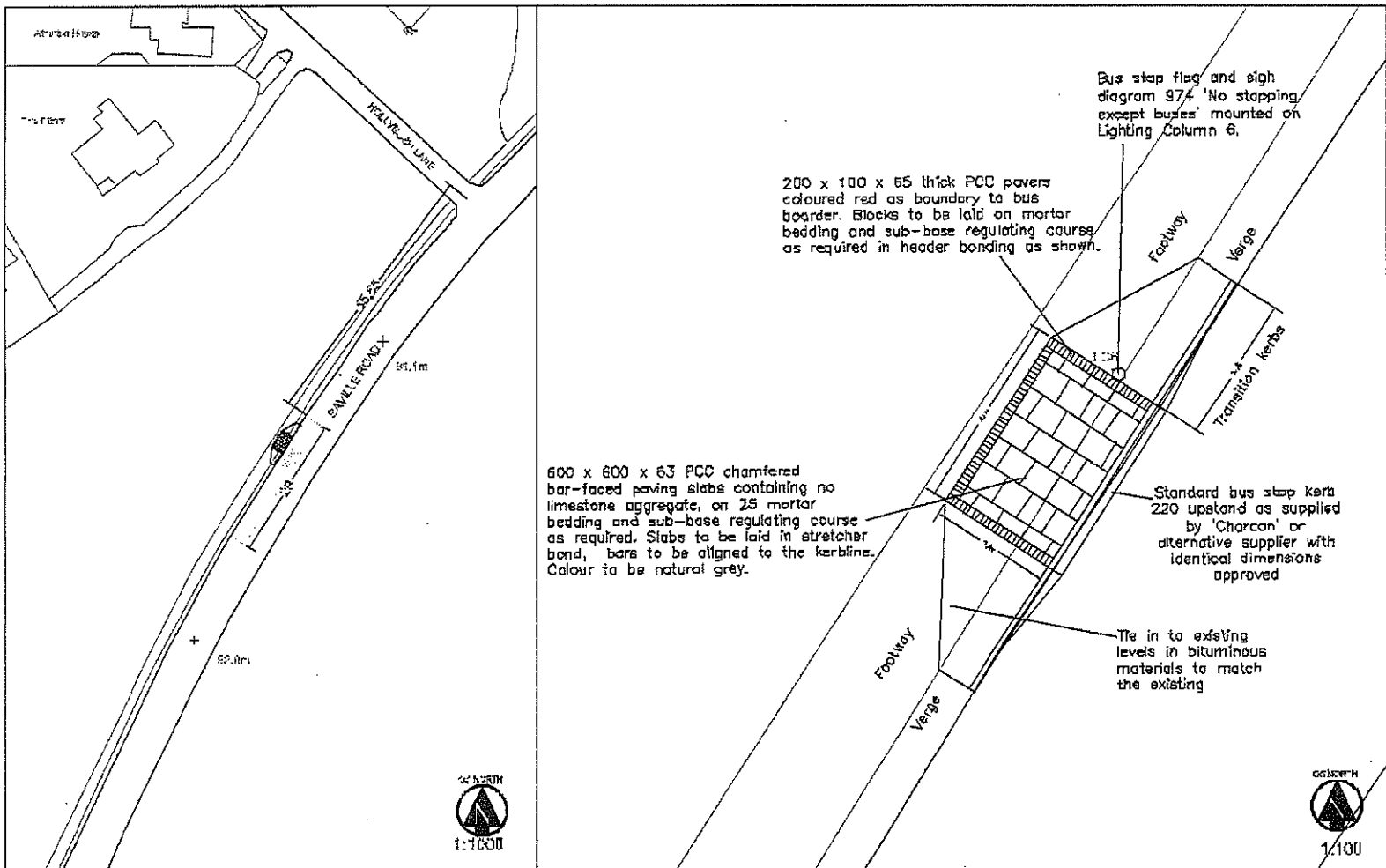
Unadopted, Under Review - Seek Clarification from Highways


- Prospectively Maintainable

© Crown Copyright 2009.  
100023406.  
Unauthorised reproduction infringes Crown Copyright and may lead to civil proceedings. Bristol City Council.



1:1,250



<p>City Development Local Highways Strategic Unit Murray Hoare 22, Trowers Place Bristol BS1 2JY</p> 	<p>TRAFFIC MANAGEMENT Proposed Bus stop Saville Road Stoke Bishop</p>	<p><small>This report is prepared for the client and is not to be used for any other purpose without the written consent of the client. The client is responsible for the accuracy of the information provided. The client is also responsible for the accuracy of the information provided. The client is also responsible for the accuracy of the information provided.</small></p>	<p>Dwg T240- Scale As shown @ A4 Date 16/03/2010</p>	<p>Rev B Ink ACB</p>
--	---	---	--	--------------------------